

FROGLINK

Kingzip Roof Profile Surface Mounted Anchor



SCAN ME

www.safetylink.com



SCAN ME

Catalogue



SCAN ME

Anchor Layout
Video



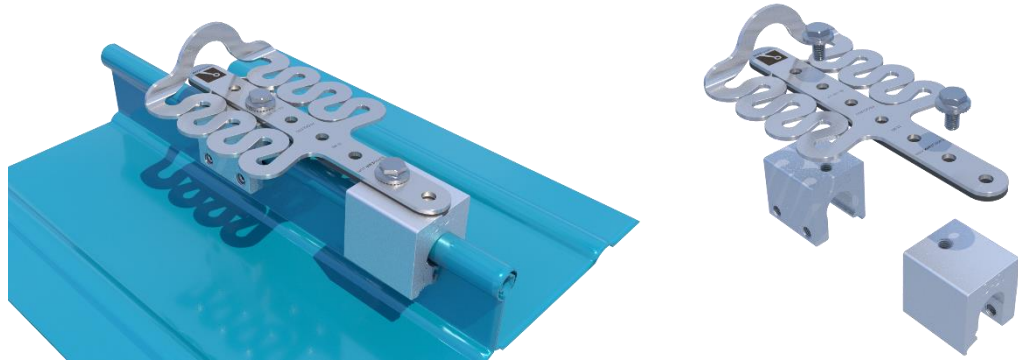
SCAN ME

Safety Centre
Training

DATA SHEET



FS 70792



SafetyLink's patented surface mounted FrogLink has set a new benchmark in the field of height safety. This revolutionary all in one unit has been designed to attach to Kingzip standing seam roof profiles.

- Fast simple unit for installation, fall protection whilst working at heights.
- Low profile reflective design is a plus for any commercial or residential enterprise wanting to maintain an aesthetically pleasing façade.
- Dynamic design reduces the load back onto the structure and person attached to the anchor.
- Install using 2 x S5 Z Clamp (Clamp, Small Insert Piece, Bolt, 2 x Setscrews).

WHAT AM I USED FOR?

A surface mounted height safety anchor point for use on Kingzip Roof Profile, will arrest from any direction.

STANDARDS

Complies with AS/NZS 1891.4, BS EN 795:2012. Rated to 15kN.

COMPLETE UNIT - PRODUCT CODE: FROGL001+S5Z				
Product Parts	Description	Qty	Weight kg	Material
FROGL001	FrogLink Unit	1	0.291	316 Stainless Steel
S5_Z_BRACKET	S5 Z Clamp	2	0.217	Alum/SS
			0.725	

All products must be installed in accordance with SafetyLink's installation handbook, using only products supplied by SafetyLink Pty Ltd.



© 2018, SafetyLink Pty Ltd, Australia.

Patents: SafetyLink Pty Ltd has a multitude of patents, patents pending, design applications, trademarks and copyrighted documents both lodged and issued. Should you wish to know the progress of our intellectual property on a specific product please email us on ip@safetylink.com and quote the product code.

Doc ID: MKT-483 Version: 7.0

Asia-Pacific/The Americas
info@safetylink.com

Europe/Africa/Middle East
europe.sales@safetylink.com

Northern Europe
uk.sales@safetylink.com